



Efforts to address homelessness show progress

Waikiki’s homeless dilemma is an issue which concerns everyone and Mayor Mufi Hannemann recently offered updates discussed at a recent Forum which included addressing chronic homelessness and creation of a safe zone. The Mayor also announced that his administration would ask the City Council to approve two new bills:

- prohibiting unlawful camping on all public property, including sidewalks and medial strips
- establishment of a procedure for the removal and disposition of personal property stored illegally in public spaces

“We’ve worked very hard to improve the quality of life for everyone in Honolulu, and this effort will continue after I leave office,” Hannemann said. “We are certainly in a better place today in terms of arriving at solutions than ever before. It takes all of us, the state, city and the community, coming together.”

The City’s Forum on Homelessness, held on June 29 and very successful in identifying priorities and strengthening relationships among government and service providers.

Based on the 2010 “Point In Time Count,” homelessness has slightly increased on O’ahu, though not as significantly as might be expected, given the current state of the economy. This is largely due to the City’s Homeless Prevention and Rapid Re-housing Program, Hannemann said.

There are, however, a growing number of people who are chronically homeless, and services for this group are limited. Hawai’i has a law—which has never been used—that allows involuntary outpatient treatment via the civil court system for people with severe mental disorders. The city plans to pursue a test case to help establish a



File photo

Continued on next page

Inside this issue:

Hyatt Regency Waikiki makes Travel + Leisure’s List of Top 25 Resorts in Hawai’i	3	Moana Surfriider celebrates summer with 2 nd Annual “Mangoes at the Moana” event	5-6
Aloha Festivals seeks applicants for 2010 and 2011 O’ahu Royal Court	3	Hilton Hawaiian Village offering great activity, retail specials in July	7
70 th Annual Nā Hula Festival	4	Introduction to Harmonica – for beginners (at WCC)	7
Hawai’i Convention Center appoints new International Sales and Service Manager	4	The World Congress on Zero Emissions Initiatives to convene at the HCC September 13 - 17, 2010	8
4th Annual Celebration of Queen Lili’uokalani’s Birthday	6	July Sunday Showcase at Waikiki Beach Walk	9

... and MORE

system whereby individuals who are chronically homeless and severely mentally ill may be assisted via this involuntary outpatient treatment law.

The city also still hopes to help address chronic homelessness by constructing new supportive housing on River Street or another location with community support. Hannemann thanked the City Council for including in this year's city budget new money to keep the project alive, and he noted that the state has also approved money for a "Housing First" project. If the River Street location is not viable, the will work with the state and community to identify another location, Hannemann said.

The City is also open to the concept of a "safe zone" for homeless campers in a location with community support. Such a zone would allow long-term camping and provide basic sanitation and safety services. The city is prepared to work with the state and community to identify a potential location and other details.



File photo

To ensure the success of a safe zone, we suggest that such a location:

- Must be safe, and therefore must have rules;
- Must have staffing/security to ensure enforcement of rules;
- Must have access to sanitation facilities;
- Must forbid drugs and alcohol;
- Should welcome homeless people with pets;
- Would likely need to charge fees to offset operating costs; and
- Should be operated by a private service provider or entity.

You're invited!

Waikīkī Improvement Association would like to invite you to the Mid-year Board of Directors & Membership meeting scheduled for Wednesday, July 21 at 4pm, at the Princess Ka'iulani Hotel, 'Ilima Room.

WIA staff will provide an update on our agenda progress and the City Department of Design and Construction will be presenting their designs for the Kalākaua Sidewalk Repaving project. We hope you can make it!

Please RSVP mail@waikikiimprovement.com or 923-1094 if you are able to attend. Mahalo!

Hyatt Regency Waikiki Beach Resort and Spa makes Travel And Leisure's List of Top 25 Resorts in Hawai'i

Hyatt Regency Waikiki Beach Resort and Spa joins twenty-four other Hawaii vacation destinations as one of the *Top 25 Resorts in Hawai'i* as voted by *Travel and Leisure* readers in the *2010 World's Best* contest.

"To have such an experienced group of travelers vote for us is an honor," says David Lewin, general manager at Hyatt Regency Waikiki Beach Resort and Spa. "I am proud of our team whose commitment to excellence and authentic hospitality is evident in every area of our resort."

Travel + Leisure is written with the traveler in mind. The magazine offers tips on affordable trips, cultural sites, and local cuisine. In 2009, Hyatt Regency Waikiki was among the list *World's Best* as one of *America's Best Hotels for Families*. Other lists include reader favorites for airlines, cruise lines, cities, and more. Please visit: <http://www.travelandleisure.com/worldsbest/2010> for more on the 2010 Top 25 Resorts in Hawaii list.



Aloha Festivals seeks applicants for 2010 and 2011 O'ahu Royal Court

Aloha Festivals, the annual cultural celebration of Hawai'i's music, dance and history, is continuing to accept applications for king, queen, prince, princess and court members for the 2010 and 2011 O'ahu Royal Court. Applicants must be of Hawaiian ancestry and may be expected to make various appearances during their reigning years, from August 2010 to July 2012.

King and queen applicants must be 35 years of age or older, while prince and princess applicants must be at least 16 to 18 or older. All other court candidates must be 14 years of age or older. Scholarships will be awarded to the chosen prince and princess to further their education after high school.

Those interested are asked to complete an application and include both a headshot and full-length photo, as well as proof of Hawaiian ancestry. Applications can be found at www.alohafestivals.com, (click "other" and "download forms"). Applications must be received by Sunday, July 18, 2010. Mail applications to the Aloha Festivals Royal Court Committee, PO Box 15945, Honolulu, Hawai'i 96830.

For more information about the Royal Court, please contact Toni Lee at 479-3263.

Hawaiian Diacritical Marks

Waikiki Improvement Association recognizes the use of diacritical marks (i.e., glottal stop (ʻ), macron (ā) in place names of Hawai'i, such as Waikīkī and Kalākaua Avenue and will include them whenever possible. We also respect the individual use (or not) of these markings for names of organizations and businesses.

There will also be times when we may not have a chance to add or change the markings in all of the articles submitted and when that happens, e kala mai.

70th Annual Nā Hula Festival

Queen Kapi'olani Park Bandstand on, Sunday, August 8, 2010

The schedule of performances is as follows:

SUNDAY, AUGUST 8, 2010

10:00 - 10:50 a.m.	Royal Hawaiian Band
11:00 - 11:50 a.m.	Puanani Alama Hula Studio
Noon - 12:50 p.m.	Leilani Alama Hula Studio
12:50 - 1:00 p.m.	2010 Lei Queen & Court
1:00 - 1:50 p.m.	Hālau Hula 'O Pua 'A'ala Hone
2:00 - 2:50 p.m.	Ka Hale I 'O Kahala
3:00 - 3:50 p.m.	Hālau Hula O Hōkūlani

(times and performers subject to change)

Beginning in 1941, DPR's Nā Hula Festival has celebrated the artistry and grace of Hawai'i's premiere dance form – Hula. The festival is Hawai'i's longest running annual non competitive hula event.

Please bring your hāli'i (covering, spread), mea 'ai (food) and enjoy a beautiful, relaxing day of hula at the park. Admission is free.

For more information, please contact Kaiulani Kauahi, Culture and Arts Coordinator at (808) 768-3041.

Hawai'i Convention Center appoints new International Sales and Service Manager

The Hawai'i Convention Center announced that Ai Matsuda Chung has been named its international sales and service manager.

Chung has over ten years experience in sales and marketing in the hospitality industry and was most recently guest relations manager at the Waikīkī Parc Hotel.

She will be responsible for nurturing and maintaining relationships with the local offices of the Asia travel companies and will be handling corporate and incentive bookings from Japan, Korea and China. She will also be responsible for servicing of groups and organizations with ties to Japan and Asia.



4th Annual Celebration of Queen Lili'uokalani's Birthday

On September 5th, the Hawai'i Pono'i Coalition is sponsoring the 4th Annual Celebration of Queen Lili'uokalani's birthday. "Onipa'a" is a great day that includes an ecumenical church service, great entertainment, cultural demonstrations and a free visit to 'Iolani Palace.

A parallel educational opportunity, the Mai Poina (Don't Forget) walking tour, retraces four pivotal days leading up to and including the overthrow of the Queen. MORE DETAILS ON THIS IN A FUTURE WWW.

Moana Surfrider, A Westin Resort & Spa, celebrates summer with 2nd Annual “Mangoes at the Moana” event

Moana Surfrider, A Westin Resort & Spa has partnered with Makaha Mangoes, Share Your Table, Star Advertiser, and Our Island Table to kickoff a month-long celebration of mangoes starting with its 2nd annual “Mangoes at the Moana” event on Saturday, August 7. Locals and visitors are invited to join in on the free festivities from 9 a.m. to 4 p.m.

Mangoes at the Moana events on August 7 will take place at the following locations and times:

Moana Mango Recipe Contest, 9 a.m. – 12 p.m., Ballroom One, Two, and Parlor Room

Chefs and chef hopefuls are invited to submit their best recipes online for pre-judging by Our Island Plate website writer Wanda Adams. Finalists are invited to present these recipes to be tasted by a panel of celebrity judges including Hawaii News Now’s Sunrise morning show anchors Grace Lee and Steve Uyehara, KHON2 Wake up 2day reporter Manolo Morales, Inside Out Magazine managing editor Simplicio Paragas, Star Advertiser’s food editor Joleen Oshiro and restaurant reviewer Nadine Kam. Submission forms, rules and more information may be found at

www.mangoesatthemoana.com. Prizes include a two-night stay in an ocean front room (\$1,400 value) at the Moana Surfrider, dinner for two (\$150 value) at Beachhouse at the Moana, and a luxurious mango-inspired spa treatment (\$150 value) at the Moana Lani Spa, A Heavenly Spa by Westin.



Mango Farmers Demo and Tastings, 9 a.m. – 1 p.m., Lani Kai Room

Hawaii’s mango farmers will provide free samples of the different varieties of mangoes that are grown on their farms. Guests will have a chance to “talk story” with the farmers to get an in-depth view of how they raise their trees to produce a world-class product.

Culinary Demonstration with Mangoes, 12 – 4 p.m., Beachhouse at the Moana and Lani Kai Room

Chef de Cuisine Rodney Uyehara from the Beachhouse at the Moana will prepare one of his own secret mango recipes as he prepares a stuffed organic chicken Keitt dish with goat, gruyere and ricotta cheese, prosciutto, shitake mushroom, topped with Conundrum demi-sauce. Chef Uyehara’s presentation will be followed by Sheraton Maui’s Chef Bryan Ashlock, and Our Island Table writer Wanda Adams who will be sharing their personal mango recipes. Complimentary samples will be available after the demonstration.

Mango Seminar by Mark Suiso, Erin Polites, and Moana Lani Spa 9 a.m. – 2 p.m., Parlor Room, Boardroom, and Moana Lani Spa

Join local farmer Mark Suiso of Makaha Mangoes, and health and wellness expert Erin Polites in several different seminars that will cover how to cultivate and grow a mango tree, the history of the mango, varieties of mangoes in Hawaii, and health and wellness tips. Other prominent local mango farmers will also be on hand to share their tips and first-hand knowledge of caring for mango trees.



Continued on next page

Mango Body Scrub Recipe Contest, 12:30 to 1:30 p.m., Moana Lani Spa, A Heavenly Spa by Westin

Moana Lani Spa invites participants to vote for Best Taste and Best Feel of homemade mango body scrub recipes created by spa employees. Voters will be eligible to win a spa scrub package and a compilation of the contest's body scrub recipes for personal rejuvenation at home.

Lunch and afternoon tea, 12 - 3 p.m., The Veranda

Afternoon Tea at The Veranda is a local tradition with a selection of fine teas, delicious finger sandwiches, salads, scones and delicate pastries, and relaxing views of Waikiki Beach. Throughout August, Mango lovers will also delight in a mango-filled menu including mango, papaya, and avocado salad, mango tea, mango scones, curd and cakes. In addition, on Saturday, August 21, enjoy Afternoon Tea with Jams World, featuring a tropical fashion show from 1 to 3 p.m. Moana Classic Tea service is \$32.50 and First Lady Tea service is \$48.

Throughout the "Mangoes at the Moana" kickoff event on Saturday, August 7, there will be free entertainment at the Banyan Courtyard from 10 a.m. - 11 p.m.

Beachhouse at the Moana invites guests to attend a pre-event kickoff on Friday, August 6 featuring a five-course mango-themed menu starting with a mango and wine tasting from 6 - 9:30 p.m. This dinner and wine pairing menu includes:

First Course

Hawaiian Style Mango Sampler

rapoza with pancetta, red pickled keitt, white pirie with soy vinegar glaze

wine pairings:

Storrs Gewurztraminer Viento Vineyard Monterey 2007

Gauthier Riesling Gravelstone Vineyards Arroyo Secco 2009

Second Course

Poached Kona lobster

Makaha mango, avocado, black truffle vinaigrette

wine pairings:

Robert Talbott Chardonnay "Cuvee Audrey" Monterey 2007

Zaca Mesa Roussanne Santa Ynez Valley Estate 2007

Third Course

Braised Big Island Red Veal

Molokai orange potato, surfing goat cheese, mango chutney, roasted Kona chocolate cacao nibs

wine pairings:

Carrefour Pinot Noir Carneros Estate 2006

McIntyre Pinot Noir Santa Lucia Highlands Estate 2007

Fourth Course

Moyer Farms Mignon of Beef

Grilled Hamakua mushrooms, foie gras, balsamic glazed mango, tawney port demi

wine pairings:

Pina Cabernet Sauvignon D'Adamo Vineyard Napa Valley 2006

Gamba "Old Vine" Zinfandel Russian River Estate 2007

Fifth Course

Deconstructed Mango Bread Pudding

Toasted mango bread, warm vanilla sauce, mango

wine pairing:

Kopke Rose of Port, Oporto, Portugal

Proceeds will go to benefit the University of Hawaii's Culinary Institute of the Pacific and Hawaii Tropical Fruit Growers. Tickets are available for \$95 per person.

NOTE: The event finale will be featured in the next issue of Waikiki Wiki Wiki Wire.

Hilton Hawaiian Village offering great activity, retail specials in July

The Hawaiian Village is offering a variety of activity and retail specials throughout the month of July. Here are some the specials that are as sizzling hot as the weather:

The new Spirit of Aloha catamaran now offers snorkel cruises! A new Lunch Snorkel Sail from 10:30 a.m. to 1 p.m. offers guests an all-you-can eat sandwich lunch at sea and snorkel in Hawaii's waters. The eco-conscious cruise lets you see fish and green sea turtles at play off the Waikiki coast. Each guest is provided with the use of an inflatable snorkel safety vest and snorkel gear, including prescription masks if needed; there's also a new snorkel that each guest can keep. The cost is \$119 for adults and \$85 for children between the ages of 4 and 17. A Reef Snorkel cruise is also offered from 2 to 3:15 p.m. and takes guests to the outer side of the reef near the Hilton Hawaiian Village. Guests can enjoy the best snorkel platform in an area inaccessible from the beach. The cost is \$65 for adults and \$42 for children between 4 and 17. To make reservations for the Spirit of Aloha catamaran, call (808) 234-7245, ext. 75019, or e-mail reservations@portwaikikicruises.com.



Independence Day may have been earlier this month, but Mandara Spa is celebrating SKINdependence through the month of July with half off any Mandara facial with a Tropical Hawaiian body scrub, the hot, new treatment being offered at Mandara Spa. The spa is also offering a new Freeze 24/7 Facial that resurfaces the skin, reducing the wrinkles and leaving the skin incredibly bright and firm. To make an appointment at Mandara Spa, call (808) 945-7721.

The new O'Neill Store by Pipe Dreams Surf Company enjoyed its grand opening this past week on the ground floor of the Grand Waikikian. To celebrate its grand opening, the store is offering a special on women's bikini sets: buy 1, get 1 free throughout the month of July. For more information, call the O'Neill Store at 330-5480, or the resort at (808) 949-4321, and ask for O'Neill by Pipe Dreams Surf.

Introduction to Harmonica – for beginners

Stan Jackson the 'ukulele virtuoso is holding a 2 hour "Harmonica for Beginners" introduction course on Thursday, July 22nd in the chapel from 10:00-12:00 p.m. at Waikiki Community Center. By the end of this introduction, most participants will be able to read harmonica tabs and play many songs written in the key of C. If you own a harmonica Stan asks to bring it to the introduction class. He recommends people to purchase one at a good music store. Stan will sell used 10-hole diatonic harmonica (sanitized) in the key of C for \$5 payable to the instructor. Each student will be provided with a collection of traditional songs in sheet music form with harmonica tabs for a fee of \$1 payable to the instructor.

Stan will continue teaching 1-hour ongoing classes in the chapel every Thursday starting July 29th from 10:00-11:00 a.m. to those interested.

The fee for the 2-hour introduction class for WCC members is \$4 and guest's \$7. The fee for the 1-hour ongoing harmonica class for WCC members is \$2 and guest's \$4.

Waikiki Community Center located in the heart of Waikiki (310 Paoakalani Avenue) offers innovative programs for children, families and senior adults and has been serving the community for the past 32 years. Complimentary parking is available while attending classes. For further information call (808) 923-1802 or visit our website at www.waikikicommunitycenter.org.

World Congress on Zero Emissions Initiatives to convene at Hawai'i Convention Center September 13 – 17, 2010

Topic: Launching the Blue Economy - 10 Years, 100 Innovations, 100 Million Jobs

The World Congress on Zero Emissions Initiatives – Launching “The Blue Economy” is slated for September 13 – 17, 2010 at the Hawai'i Convention Center in Honolulu. Attracting experts from around the globe, The Congress will focus on design of an economic system driven by innovations, generating jobs and building social capital – known as “The Blue Economy”. Get short timely messages from The World Congress on Twitter: <http://twitter.com/zeroemissionsHI> .

The Blue Economy is based on one hundred plus breakthroughs in businesses that have proven their competitiveness. The innovations being addressed at The World Congress are related to Energy, Food, Health, Housing, Transportation, Waste and Water, and how these innovations integrate and provide new job opportunities in today's changing world. Concrete case studies from around the world will inspire entrepreneurs to follow suit.

In attendance will be world renowned leaders and entrepreneurs including Professor Gunter Pauli, founder of Zero Emissions Research Initiatives (ZERI) and author of “The Blue Economy”. Professor Pauli stated; “Our challenge today, is to respond to the basic needs of all with what we have, to build upon indigenous cultures as in Hawai'i, learning from the ancient systems of the past, while drawing upon concrete innovations and examples from around the world”. Other keynote speakers include: Tomoyo Nonaka, Chair – GAIA Initiative (former CEO of Sanyo - Japan); His Excellency, The Honorable Minister of Education, Lyonpo Thakur S. Powdyl, Royal Government of Bhutan; Anders Nyquist, Architect SAR / MSA, Founder EcoCycle Design, Sweden and Nainoa Thompson, Native Hawaiian Master Navigator.

Regular Full Registration

The regular full registration must be completed before September 9, 2010. This ticket category includes full attendance to the congress for one person and one ticket to each dining event. The regular full registration price is \$975.

Government, Kama'aina and Students

Government, Kama'aina and Students registration includes full attendance for one person and one ticket to each dining event. Registration needs to be completed by September 9, 2010 and the price is \$720 (inclusive of evening functions) and \$495 (excluding evening functions).

New Daily Registration Fees!

Monday, Sept. 13, 2010 - Opening Ceremonies, full access to exhibit hall - plenary luncheon with keynote speaker Professor Gunter Pauli, afternoon sessions, refreshment break and Evening Reception "Cuisines of Hawai'i". The price is \$ 250 for the day.

Tuesday, Sept. 14, 2010 - Full access to exhibit hall, morning sessions, coffee break, plenary luncheon with key note speakers Pono Shim and Nainoa Thompson, refreshment break and afternoon sessions. The price is \$ 170 for the day

Wednesday, Sept. 15, 2010 - Full access to exhibit hall, morning sessions, coffee break, plenary luncheon with key note speaker Tomoyo Nonaka, refreshment break and afternoon sessions. The price is \$ 170 for the day.

Thursday, Sept. 16, 2010 - Full access to exhibit hall, morning sessions, coffee break, plenary luncheon with His Excellency, The Honorable Minister of Education, Royal Government of Bhutan, refreshment break and afternoon sessions and "The Blue Economy" Awards Dinner. The price is \$ 300 for the day.

Friday, Sept. 17, 2010 - Full access to exhibit hall, morning sessions, coffee break, plenary luncheon with key note speaker Paulo Lugari pioneer of Los Gaviotas. Followed by the closing ceremonies. The price is \$ 150 for the day.

Key Sponsors and Exhibitors: include CT&T America, the world's largest producer of electrical vehicles; ANA – All Nippon Airways, First Wind, Blue Planet Foundation, Enterprise Holdings; Enterprise Rent-a –Car, National, Alamo and We Car, Hawaiian Electric Company, Hawaii Business Magazine, Pacific Biodiesel Inc., Puna Geothermal Venture, Sopogy, University of Hawai'i and the United States Environmental Protection Agency (EPA).

Find additional information about the conference and register at: <http://zeroemissionshawaii.org>; <http://www.facebook.com/pages/The-World-Congress-on-Zero-Emissions-Initiatives>; <http://twitter.com/zeroemissionsHI>.

Sunday Showcase Waikiki Beach Walk®

The Sunday Showcase is a free weekly program which takes place at the Waikiki Beach Walk stage plaza every Sunday afternoon (weather permitting) from 5:00 pm to 6:00 pm, unless noted otherwise.

Valet parking for up to four hours is available for \$6.00 at the Embassy Suites-Waikiki Beach Walk (201 Beachwalk) and the Wyndham Vacation Ownership-Waikiki Beach Walk (227 Lewers Street), with any same-day purchase from any Waikiki Beach Walk merchant.

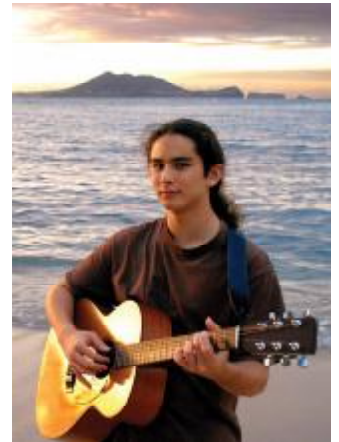
July 18 - Keali'ika'apunihonua Ke'ena A'o Hula (Hula Halau)

Lead by kumu hula Leimomi Ho, this halau perpetuates the traditional hula styling and legacy of Victoria Keali'ika'apunihonua I'i Rodrigues. The importance of respecting the art of hula and the cultural traditions from past generation is instilled within every student. Kumu hula Leimomi Ho also teaches the art of hula at Kapiolani Community College and has been doing so for over ten years. Her halau has performed and competed in countless competitions including the Merrie Monarch, King Kamehameha, Hula 'Oni E, and has won several top honors.

July 25 - Danny Carvalho - (Slack Key Guitar)

Danny Carvalho (right), a student of two great Hawaiian slack key legends; Ozzie Kotani and Dennis Kamakahi, started playing guitar at the tender age of nine. His musical attributes are also influenced by the styling of Ledward Ka'apana, Atta Issacs and Peter Moon. In 2005, Danny became the first slack key artist to play kiho'alu on National Public Radio's classical music program "From the Top."

A year later, he released his first album called "Slack Key Journey - On My Way," which received a Na Hoku Hanohano award nomination. He released his second album called "Somewhere," which was also nominated for a Na Hoku Hanohano award in 2008.



Waikiki Hula Show at the Kūhiō Beach Hula Mound

Authentic Hawaiian music and hula shows by Hawai'i's finest hula *hālau hula* (dance troupes) and Hawaiian performers. Opens with traditional blowing of conch shell.

Tues-Thurs-Sat-Sun, weather-permitting from **6:30-7:30 p.m.** at the Kūhiō Beach Hula Mound, near Duke Kahanamoku statue, beachside at Uluniu & Kalākaua Ave. in Waikiki.

FREE and open to the public. Outdoors, casual, seating on the grass; beach chairs, mats, etc. okay. Cameras welcome. Presented by the City & County of Honolulu, the Hawai'i Tourism Authority and Waikiki Improvement Association.

For information, call Marnie Weeks, Producer, Kūhiō Beach Hula Shows, 843-8002.

Week-nights

Every Tuesday - Ainsley Halemanu and Hula Hālau Ka Liko O Ka Palai

Every Thursday - Joan "Aunty Pudgie" Young and Puamelia

Weekends

Sat July 17 - Joan S. Lindsey and the Joan S. Lindsey Hula Studio

Sun July 18 - Leimomi Ho and Keali'ika'apunihonua Ke'ena A'o Hula



Street activity in / near Waikīkī (courtesy of the City)

July 25, 2010 Sunday
5:20AM Starts
11:00AM Ends

30TH ANNUAL TINMAN TRIATHLON sponsored by Tinman Unlimited. The event is expected to have 1,000 participants. Swim will be at: Queens Beach, Queen Kapi'olani Park. then : Bike will start at Swim/Bike Transition area, to Kalakaua Ave., to Diamond Head Rd., to Kahala Ave., to Kealaolu Ave., to Kalaniana'ole Hwy., to Lunalilo Home Rd., to Hawaii Kai Dr., to turnaround at Kealahou St., to Hawaii Kai Dr., to Lunalilo Home Rd., to Wailua St., to Keahole St., to Kalaniana'ole Hwy., to Kilauea Ave., to Elepaio St., to Kahala Ave., to Diamond Head Rd., to Kalākaua Ave., to transition area in Queen Kapiolani Park, near bandstand Run will start at Kapi'olani Park transition area, to Kalakaua Ave., to Kapahulu Ave., to Paki Ave., to Monsarrat Ave., to 18th Ave., to Kilauea Ave., to 'Elepaio St., to Kahala Ave., to Diamond Head Rd., to Kalakaua Ave., to end at Honolulu marathon finish line.

Contact: Olga Caldwell 595-5317 Fax: 595-5317,
E-mail: tinmanhawaii@hawaii.rr.com For more info, visit their website:
<http://www.tinmanhawaii.com/>



Waikiki Improvement

2255 Kuhio Avenue, Suite 760
Honolulu, HI 96815

Phone: 808-923-1094, Fax: 808-923-2622

Waikiki Wiki Wiki Wire is published weekly by
Sandi Yara Communications for WIA.
If you would like to share your news with other
members, please send your info to:
editor@waikikiimprovement.com.

Check out our website at:

www.waikikiimprovement.com



Twilight at Helumoa

Get your grove on

Saturday, July 24, 2010

Royal Hawaiian Center
Celebrating 30 years at Helumoa

6 pm – Hō'ike hula kahiko
Hālau Hula O Maiki
Kumu Hula Coline Kaulaloku Aiu

7 pm – Hawaiian concert
Hōkū Zuttermeister

Aloha Festivals Beer & Wine Garden,
AF 2010 t-shirts and ribbon launch
"Mele 'Ailana – Celebrate Island Music"

Hōkū Z



Shopping, dining, the Kaulani Heritage
Room, Pā'ina Lānai Food Court,
fun for the entire 'ohana!
\$5 flat rate parking

E kipa mai – welcome ...



Aloha Festivals '10

Manuahi
FREE CONCERT



July 2010

ALOHA FRIENDS, COME JOIN THE FUN ANY DAY OF THE WEEK!

SUNDAYS	6pm - Vaihi 9pm - Ellsworth Simeona
MONDAYS	TBA
TUESDAYS	5pm: Freesound 9pm: Boi & Tru Rebels
WEDNESDAYS	6pm: Open Mic Night
THURSDAYS	6pm: UnNatural 9pm: Sani & Les (July 1 st , 8 th & 15 th) 9pm: Beach 5's w/Sani Apuakehau (July 22 nd & 29 th)
FRIDAYS	5pm: Kunoa 7:30pm: Vaihi 10pm: Local Uprising
SATURDAYS	3pm: Dead Beats the Band (July 24 th) 5pm: Johnny Helm 7:30pm Local Uprising (July 3 rd) 7:30pm: Kunoa (July 10 th , 17 th , 24 th & 31 st) 10pm: Ellsworth Simeona



*Please make sure to check our website for our most up-to-date events, menus and information.

www.tikisgrill.com



Follow all our up to date
events and news directly:

